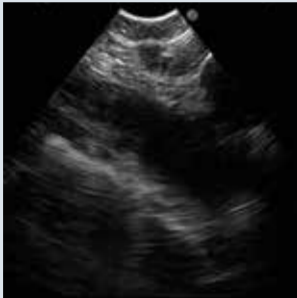
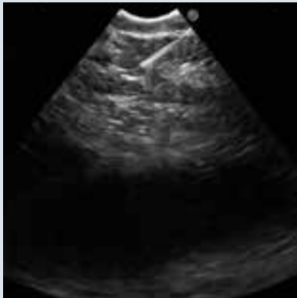


Lung cancer – the lymph node stations According to the latest IASLC classification


EBUS



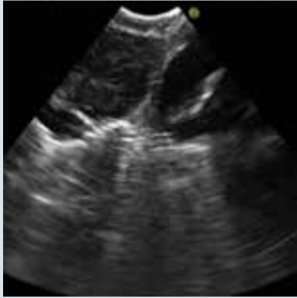
Lymph node station 2R




Lymph node station 4R with EBUS-TBNA



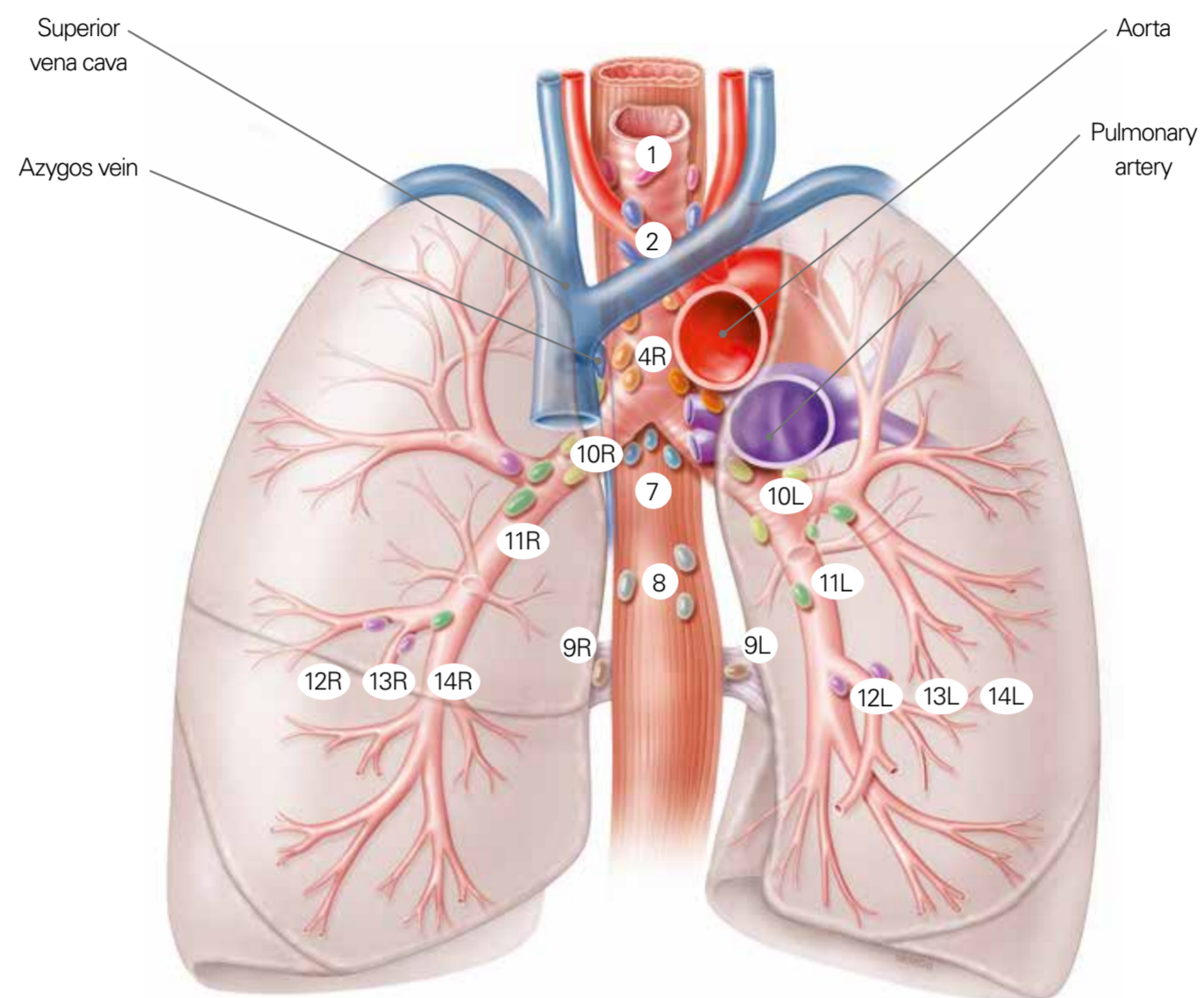
Lymph node station 7 with EBUS-TBNA (RMB)



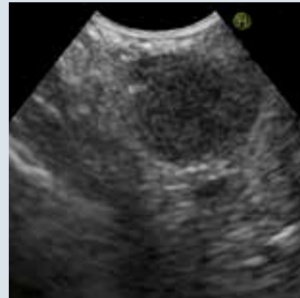
Lymph node station 10R



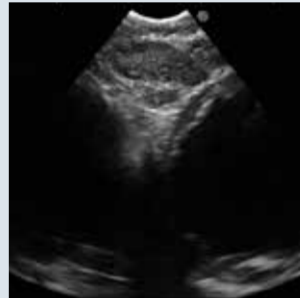
Lymph node station 11R



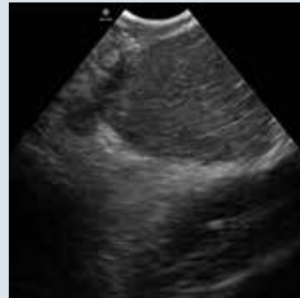
EBUS



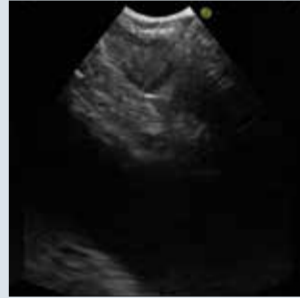
Lymph node station 2L



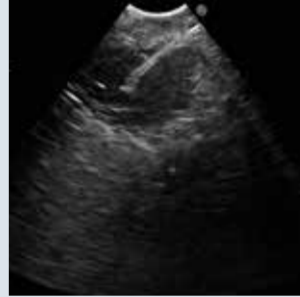
Lymph node station 4L



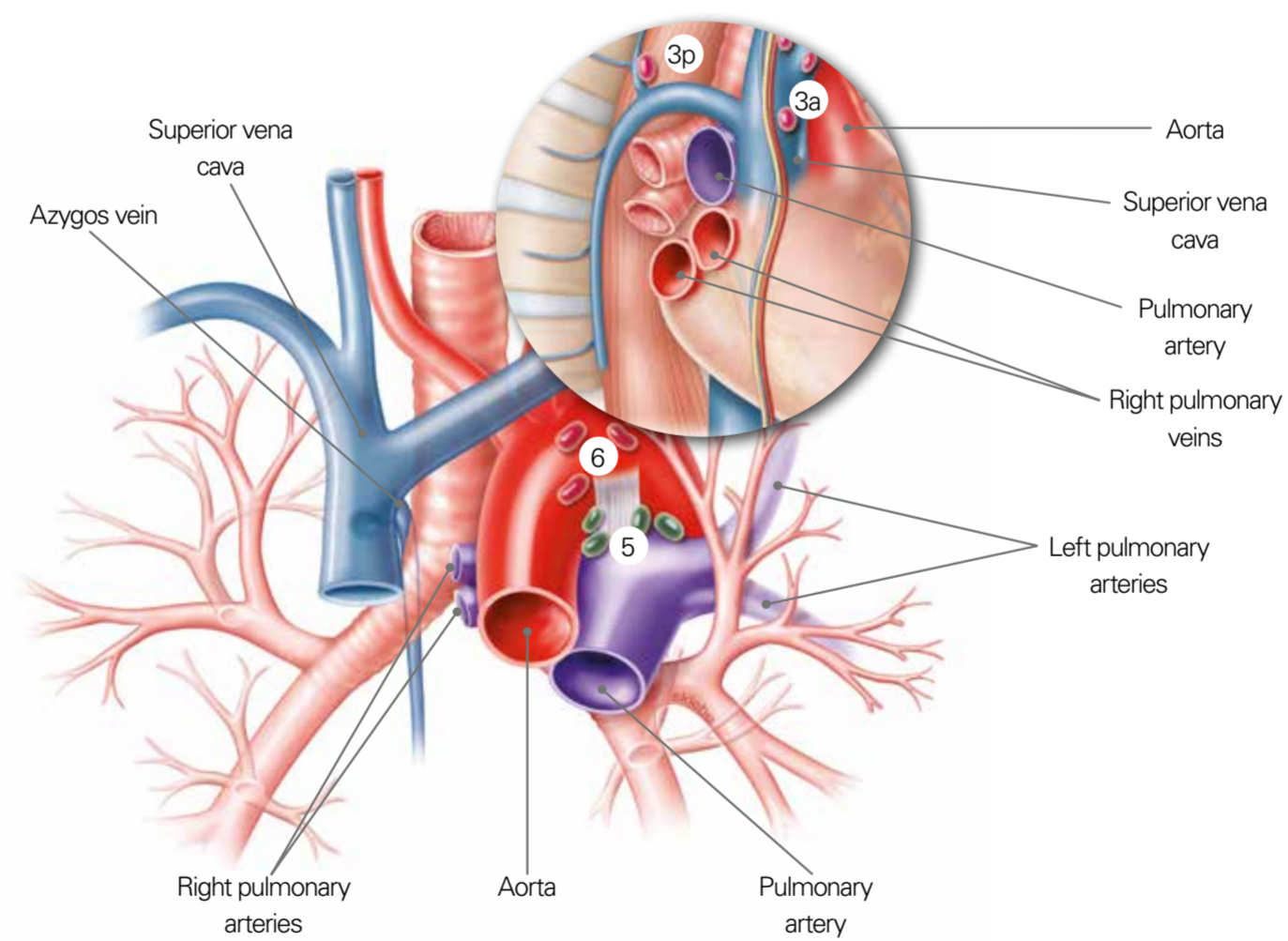
Lymph node station 7 (LMB)



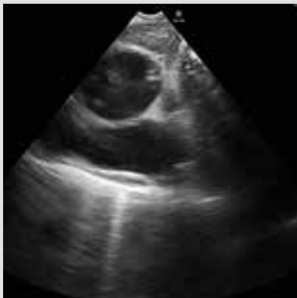
Lymph node station 10L



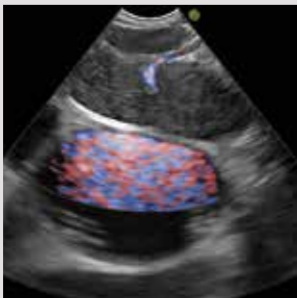
Lymph node station 11L with EBUS-TBNA



EUS-B / EUS-(B)



Lymph node station 7



Lymph node station 7 with Fine Flow

Superior Mediastinal Nodes

- Supraclavicular zone**
- 1 Highest mediastinal
- Upper zone**
- 2 Upper paratracheal
 - 3a Prevascular
 - 3p Retrotracheal
 - 4 Lower paratracheal (including Azygos Nodes)

Aortic Nodes

- AP zone**
- 5 Subaortic (A-P window)
 - 6 Para-aortic (ascending aorta or phrenic)

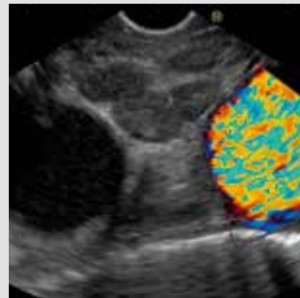
Inferior Mediastinal Nodes

- Subcarinal zone**
- 7 Subcarinal
- Lower zone**
- 8 Paraesophageal (below carina)
 - 9 Pulmonary ligament


N₁ Nodes

- Hilar/interlobar zone**
- 10 Hilar
 - 11 Interlobar
- Peripheral zone**
- 12 Lobar
 - 13 Segmental
 - 14 Subsegmental

EUS-B / EUS-(B)



Lymph node station 4L with Color Doppler



Lymph node station 8